

Panel Light Series (Hazardous Locations)

NightSky LED® is a family of modular lighting systems with interchangeable and field replaceable components that can be installed virtually anywhere, making it the perfect solution for lighting retrofit and site standardization projects. Suitable for indoor, outdoor, cold, wet and hazardous locations.

General

Fixture housing is all aluminum construction. Standard fixture utilizes terminal block that contains one or two universal drivers that operate at 700mA. Canopy (high bay), Flood (yoke), Wallmount and Recessed mounting brackets are standard. Custom adaptor kits are available for other types of mounting. Mercury and lead free, RoHS compliant. Luminaire carries a standard ten (10) years warranty. NVLAP® lab tested, DLC and Lighting Facts listed, CSA/CSAus certified (253872).

Suitable for installation in Hazardous Locations:

Class I, Division 2, Group A, B, C, D; Class II, Division 1, Groups E, F, G.

Electrical

Standardized watertight LED light modules are designed to be exposed to environment providing self-cleaning and superior cooling, thus ensuring extreme longevity. Calculated lifespan of 120,000+ hours with >70% lumen maintenance (L70).

Lighting output sourced from high power long life CREE® X-Lamp LEDs - XPG2 (averaging over 115 lm/W efficacy). Light color temperature is offered in 4500K (standard) and optional 3500K, 4000K, 5000K (+/- 500K) with minimum CRI of 75.

Internal wiring features WAGO® and Molex® quick connectors. System is powered by universal high performance Philips® drivers 120–277V (1.4–0.6A) or 347–480V (0.5–0.35A) 50/60Hz with power factor (PF) >98% and Total Harmonic Distortion (THD) <10% at full load. Rated life of 110,000+ hours @ TC 70C. Dimmable and programmable (PWM, 1-10V Dimming, DALI) options are available. Drivers provide 2.5kV internal surge suppression protection. Luminaire can be equipped with circuit module designed to withstand 10kV or 20kV of transient line surge.

Optics

Choice of up to ten (10) interchangeable and field replaceable LED engines/modules fitted with fourteen (14) LED chips covered by high-efficiency lenses manufactured from injection-molded high-impact resistant and UV-stabilized Polycarbonate. Optics are precisely designed to shape Type I, II, III, IV* and V distributions. Diffused optics for low height installations are also available. Dark Sky friendly.

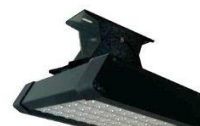
Specs

Model No.	H014T	H028T	H042T	H056T	H070T	H084T	H098T	H112T	H126T	H140T
LED Modules (Size)	1	2	3	4	5	6	7	8	9	10
LED Consumption	28W	56W	84W	112W	140W	168W	196W	224W	252W	280W
Full Consumption	30W	60W	90W	120W	150W	180W	210W	240W	270W	300W
Total Flux (3500K) - WW *	2960 lm	5955 lm	9243 lm	12530 lm	15780 lm	19068 lm	22355 lm	25643 lm	28930 lm	32217 lm
Total Flux (4000K) - NW*	3205 lm	6726 lm	10089 lm	13452 lm	16739 lm	20027 lm	23315 lm	26601 lm	29890 lm	33176 lm
Total Flux (4500K) - PW	3265 lm	6815 lm	10175 lm	13700 lm	16865 lm	20150 lm	24020 lm	26905 lm	30395 lm	33885 lm
Total Flux (5000K) - CW*	3496 lm	7015 lm	10558 lm	13845 lm	17133 lm	20420 lm	24451 lm	27126 lm	30810 lm	34435 lm
Net Weight (kg lb)	5.5kg 12.3lb	7.0kg 15.5lb	8.0kg 17.6lb	9.1kg 20.0lb	10.0kg 22.1lb	10.9kg 24.0lb	12.2kg 27.0lb	13.2kg 29.0lb	14.0kg 31.0lb	14.5kg 32.1lb
Dimension L (mm in)	208mm 7"	240mm 9"	302mm 12"	364mm 14"	426mm 17"	488mm 19"	550mm 22"	612mm 24"	674mm 27"	736mm 29"
EPA (SqFt)	0.55	0.62	0.69	0.75	0.82	0.89	0.95	1.02	1.09	1.16

CL – Canopy, High Bay



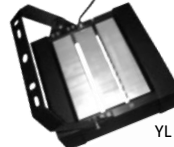
TL – Tunnel



RL – Recessed



FL – Flood



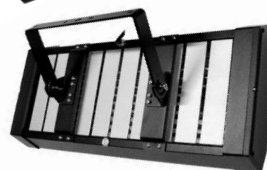
PL – Pole



WL – Wallmount



YL – Yoke



CM – Custom
 Custom Adaptors,
 Retrofit Kits are
 available.
 Contact Plant for
 details.

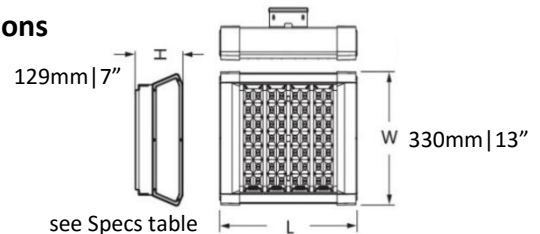
powered by **CREE** **PHILIPS ADVANCE** LM79 LM80 TM21 IP66



Finish

Aluminum Alloy components finished in polyurethane powder coat paint for superior protection against fade and wear. All fasteners are stainless steel. Standard colors include black, grey, bronze and white. All components feature an IP66 (NEMA 4X) enclosure rating. The NightSky LED® luminaire is suitable for operation in -40°C to +65°C and 10% ~ 95% humidity ambient environments.

Dimensions



Scan QR Code to get more information about our Products, IES Files and Photometric Reports.
 All information is subject to change without notice. ® are Registered Trademarks of their respective owners.
 ©NightSky LED is the Registered Trademark of BDS Industrial Solutions Inc.
 ©2015 BDS Industrial Solutions Inc. All rights reserved. Rev. 10/15

Panel Light Series (Hazardous Locations)

Photometrics

Symmetrical					Diffused		Asymmetrical	
T1	M1	N5	T5	W5	D1	D5	A2	A3
Type I Short	Type I Medium	Type V Narrow	Type V Medium	Type V Wide	Type I	Type V	Type II Medium	Type III Long
95° - 85°	145° - 95°	20° - 20°	60° - 60°	120° - 120°	Diffused	Diffused	150° - 75°	155° - 100°
<i>highbay</i>	<i>alleyway</i>	<i>spotlight</i>	<i>flood</i>	<i>lowbay</i>	<i>low height</i>	<i>very low height</i>	<i>roadway</i>	<i>area light</i>

Ordering Information

sample order: BDS-H028T-Z1-A3-PW-BK-FL

BDS - - - - -						
MODEL	POWER	OPTICS	LIGHT COLOR	HOUSING	MOUNTING BRACKET	
H014T (size 1)	Z1 (120 - 277V AC)	T1 (95° - 85°)	WW (3500K +/- 500K)*	RA (Raw Grey)	CL (Canopy, High Bay)	
H028T (size 2)	Z3 (347 - 480V AC)	M1 (145° - 95°)	NW (4000K +/- 500K)*	BK (Black)	RL (Recessed)	
H042T (size 3)		N5 (20° - 20°)	PW (4500K +/- 500K)	WT (White)	WL (Wallmount)	
H056T (size 4)		T5 (60° - 60°)	CW (5000K +/- 500K)*	BZ (Bronze)	FL (Flood Light)	
H070T (size 5)		W5 (120° - 120°)		CH (Custom)*	FLR (Reinforced Flood)	
H084T (size 6)		D1 (I, Diffused)			YL (Yoke Flood, Size 6+)	
H098T (size 7)		D5 (V, Diffused)			YLR (Reinforced Yoke, Size 6+)	
H112T (size 8)		A2 (150° - 75°)			CHL (Chain High Bay)	
H126T (size 9)		A3 (155° - 100°)			PL (Pole Mount)	
H140T (size 10)					TL (Tunnel Light)	
					CM (Custom Mount)*	

* Custom options. Contact plant for details

Accessories and installation adaptors - AdaptorMount™

AdaptorMount™ is a family of standard and custom designed brackets, frames and other accessories. They ensure that any NightSky LED® fixture can be easily installed on virtually any mounting surface. Usually, no modifications are needed to existing poles, brackets and wiring. Some of AdaptorMount™ brackets are shown below:

AMT-LDA-CHAM	AMT-SLF	AMT-ANG	AMT-CUSTOM
Lid Adaptor for Crouse-Hinds® Champ® Series	Slipfitter Specify ID at time of order	Angle Bracket	Custom brackets Contact Plant for details

For more details:
www.AdaptorMount.com



Scan QR Code to get more information about our Products, IES Files and Photometric Reports.
 All information is subject to change without notice. ® are Registered Trademarks of their respective owners.
 ©NightSky LED is the Registered Trademark of BDS Industrial Solutions Inc.
 ©2015 BDS Industrial Solutions Inc. All rights reserved. Rev. 10/15

www.NightSky-LED.com